

|||
Hetchin's

LIGHTWEIGHT CYCLE SPECIALISTS

798/800, SEVEN SISTERS RD,
TOTTENHAM,
LONDON, N.15.



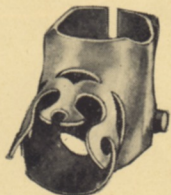
W.K. BICKNELL



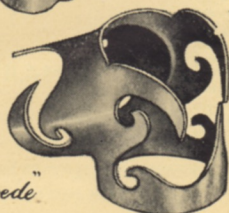
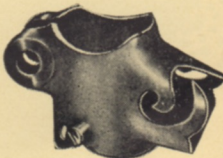
Hetchins



Bicycle Frame
Lugs of Distinction



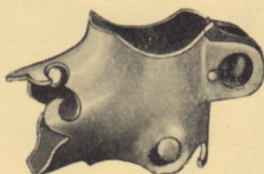
"Nulli Secundus"



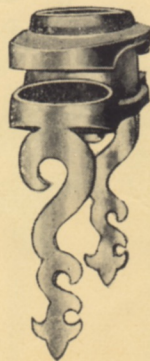
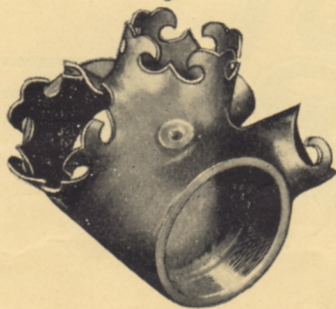
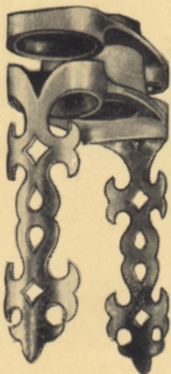
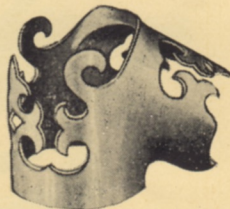
"Experto Crede"



"Magnum Opus"



"Magnum Bonum"



Dear "Fellow Cyclists"

HEAD BADGE

We are pleased to offer you a Brochure to illustrate our bicycles.

On its pages you will find most of the information required concerning current frame designs, finishes and (we hope you will not need it), repairs and renovations. For your scrutiny, a separate printed page has been added illustrating our latest lug CUT-OUTS and their appropriate names, and to avoid any confusion with names and frame designs, we give examples of how the names of the lug patterns are used and linked with the frame designs.

A customer, for instance, requires a PATH design, and finds suitable our design No. 10; his financial commitments limit him to, say, £16. 17. 6, which means that he orders our "Experto Crede" lug pattern built to Path Model No. 10. Another definition of our method could be like this: The customer decides on the Road Racing Model, design No. 6, and chooses the "Magnum Bonum" lug pattern (the stiffener on fork blades are standard fitment), total cost with the finish quoted is £18. 17. 6. What could be simpler?

CUT-OUT LUGS

As you are aware, Hetchins were the first bicycle makers to see the hidden strength cut-out lugs give to the brazed joint, and have championed the cause for ornamental lugs against the combined force of our lesser skilled brethren in the cycle trade. We are now introducing an ornamental stiffener to each side of the fork crown; this has been decided by us after two years' trial on our "Magnum Opus" design. Today, we think the ornamental stiffener is a must, and time will prove this, as others realise, and copy our principles in lug design.

SERVICE IN TRANSIT

We have had made cartons to eliminate damage in transit, and we rely on the goodwill of our clients to return them immediately, carriage being paid by the sender. The small cost involved when the carton is returned empty more than compensates the client by having received in spotless condition his future cycling steed.

Here's to many enjoyable rides,
Yours sincerely, "HETCH"



"VIBRANT" REAR TRIANGLE

Introducing

THE PLUS

Built with Experto Crede Lugs, "531" Reynolds Butted Tubing and BUTTED Fork Blades and Seat and Chain Stays (Vibrant or Orthodox), Agrati Ends.

CIRCUIT OF BRITAIN DESIGN IS STANDARD:—

72° Head and 73° Seat Angles 21½" Top Tube:— The PLUS Model has three very important reinforcements, the Fork Crown, Bottom Bracket and Seat Stay Bridge, the combination of which makes a frame of exceptional strength where needed.

The illustration shows the parts used before building the frame and also our own Curved Bridge for use with Mafac or similar type brakes.

The finish is unique for a standard colouring being enamelled (any colour) with the Fork Crown, Bracket and Seat Stay Bridge in contrasting colour.

PRICE WITH REINFORCEMENTS AND MAFAC BRIDGE AS ILLUSTRATED

£17 18 0 For the Road Frame £18 8 0 For the Track Frame

ONLY REYNOLDS "531" SPECIAL TEMPER TUBING IS USED ON HETCHIN'S FRAMES
BUILT WITH EXPERTO CREDE LUGS



DISTINCTIVE LUG PATTERNS

"EXPERTO CREDE" No. 1 (cast lugs). Specification:

Built to any possible design. Constructed of cast lugs, and hand cut, with bottom bracket shell of our own pattern. Reynolds "531" tubing (DOUBLE BUTTED) with $\frac{3}{8}$ " rapid taper chain stays, and $\frac{1}{8}$ " fine taper seat stays. Oval or round finely tapered fork blades. Malleable crown, oval or round. Standard brazed parts on Road Models, two rear brake cable stops under or on top of top tube, tunnel and stops suitable for gears with the chain stay stop or adjuster. 18" pump pegs. Mudguard eyes on fork ends.

Fork crown drilled for brake. Curved bridge with brake reinforcement. (T.D.C. Dubied or "Alatet") expander head fittings. Bayliss Wiley Hollow Bracket spindle. Reynolds Alloy Seat Pin. Enamelled any colour, and transfers Olympic Bands and Head Badge
£16 17 6

"EXPERTO CREDE"

(with pressed steel lugs)

£15 5 0

"MOUNTAIN KING"

(with prugnat lugs and special reinforced crown)

£15 15 0

"NULLI SECUNDUS" (cast lugs)

If our frame designs do not suit you, we will make one that will. Built of finest malleable castings, and low temperature brazed with special temper Reynolds double butted "531" tubing, and $\frac{3}{8}$ " rapid taper chain stays, and $\frac{1}{8}$ " fine tapered seat stays. The seat cluster is brazed partly over the top of the lug. Oval or round finely tapered fork blades. Steel forged crown, two-piece for $\frac{3}{4}$ " round and solid forged oval. Standard brazed parts for Road Models. Two rear brake cable stops under top or on top tube. Tunnel and Stop for Gears, the chain stay stop for adjuster. 18" pump pegs on top or seat tubes. Italian style. Mudguard eyes on fork ends. Petal shaped seat eyes.

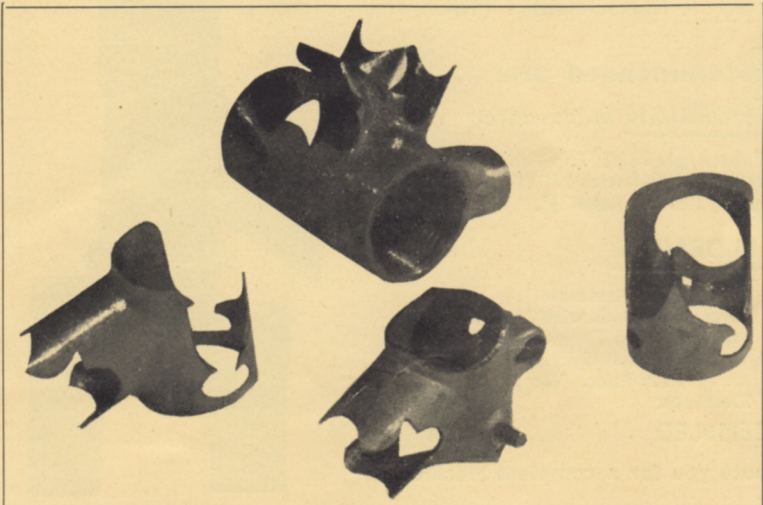
Fork crown drilled for brake on Road Models. Seat stay bridge sleeve reinforced for brake. "T.D.C." head fittings, Bayliss Wiley Hollow Bracket spindle. Reynolds Alloy Seat Pin. Basic enamelled finish any colour. Transfers with Seat Panel and Head Badge
£18 7 6

"MAGNUM BONUM" (cast lugs)

Can be precision built to your own design. Carefully brazed with malleable castings, bottom bracket shell of our own design. Reynolds special temper, double butted steel tubing, with $\frac{3}{8}$ " round chain stays with domed ends, $\frac{1}{8}$ " fine tapered seat stays. Oval or round finely tapered fork blades. Steel forged fork crown, incorporating the ornamental stiffener. Brazed parts on Road Models, two brake stops for bare cable. Tunnel or Rollers. 18" pump pegs top or seat tube. Guard eyes incorporated on fork ends, but can be brazed on. Fork crown drilled for brake. Rear bridge drilled and reinforced for brake. (T.D.C. Dubied or "Alatet") head fittings, Bayliss Wiley Featherweight Bracket interiors, hollow spindle. Reynolds Alloy Seat Pin. Basic finish enamelled any colour, with H or Six-Day panelled Transfers **£18 7 6**

"MAGNUM OPUS" (cast lugs). Availability of this model is extremely limited.

Built how you want it, with malleable cast lugs, for either Head-clip or expander. Low temperature brazed. Built with precision and filed with extreme care to take the finest finish. Reynolds Special Temper tubing, fork blades and chain and seat stay members. Chain stays are $\frac{3}{8}$ " rapid taper. Seat stays $\frac{1}{8}$ " fine taper. Oval or round blades (to choice). Forged crown with ornamental stiffener as illustrated on separate leaflet. Standard brazed parts on Road Models. Two brake stops for bare cable under top tube, cable stops, tunnel for gears 18" pump pegs. Guard eyes incorporated on fork ends, but can be brazed on instead. Fork crown drilled for brake. Seat stay bridge drilled and reinforced for brake. Bayliss Wiley Featherweight Bracket interiors (hollow spindle). Reynolds Alloy Seat Pin. Enamelled any colour and lugs lined **£25 19 6**



HETCHINS' BRILLIANT

Is one of our old and trusted models and reintroduced because of a demand for its own special design which has proved to give full strength and rigidity in building.

The BRILLIANT can be also built to your own design, or as a Track Iron.

The frame specification is LUGS, with Reynolds Special Temper Tubing Enamelled with Lugs

LINED the price is:
£13 19 6

ADDITIONAL CHARGES FOR FINISHES AND BRAZED-ON PARTS, etc.

	£ s. d.
Chrome frame and fork with coloured bracket and V on fork	6 10 0
Chrome head or head lugs only	1 5 0
Chrome seat lug	1 2 0
Chrome crown and front and rear ends	2 1 6
Chrome rear triangle with seat lug ...	2 19 6
Chrome fork all over	1 14 6
Chrome crown	12 6
Two-colour shaded lustres	10 0
Flamboyant on silver lustre	10 0
Enamelled bands, 6"	8 6
Split panels, any colour	10 6
Double box lining	15 6
Feather lining	15 6
Lining lugs, from... ..	12 0

	£ s. d.
Curved Mafac Bridge	10 0
Campagnolo head fittings	1 10 0
Chater-Lea head fittings Head-clip ...	9 0
Chater-Lea bracket fittings	10 0
Best quality T.O.C. head fittings, stand-ard fitment	
Ornamental stiffeners can be included on the "Nulli Secundus" and "Experto Crede" frames	12 6
Simplex or Agrati ends with gear boss	7 0
Rollers on bracket—single or double 5/- and	6 0
Campagnolo front and rear ends	16 0
Pennine compressed air pump clip ...	6 9
Packing and carriage to all parts of the country... ..	10 0
Packing to Northern Ireland and Eire ...	12 6

Bonderizing inclusive on all enamel or lustre finishes.

FRAME AND FORK REPAIRS

Repairs are undertaken to Hetchins frames only, and no transfers are supplied separately to others entrusted to renovate our frames, and any repair or renovation undertaken by Hetchins has the skill and quality workmanship applied to it as a new frame, and we like to feel that a repair by us is as good as new.

	£ s. d.
New top-tube "531" D.B.	1 17 6
New down-tube "531" D.B.	1 17 6
New seat-tube "531" S.B.	1 17 6
Two new tubes "531" D.B.	3 10 0
Front forks (not enamelled)	2 15 0
New chain stays, including bridge ...	1 17 6
New seat stays, including bridge ...	1 17 6
New fork steerer	19 6
New rear ends (plain)	1 15 0
New bracket shell	3 0 0
New front ends (Agrati)	18 6

	£ s. d.
Simplex lever boss	5 0
New front ends	14 6
New fork blades and ends	1 17 6
Cable stops, each	2 0
Gear bracket on fork end	10 0
Lamp bracket boss	5 0
Guard eyes, pair	4 0
Tracking, from	8 0
Simplex gear adjuster	2 0
Tunnel on bracket	4 0

Repairs to "Magnum Opus" by inspection only.

RENOVATIONS

	£ s. d.
Enamelling any colour, including sand-blasting and bonderizing	1 15 0
Lustres, including sandblasting and bonderizing	2 0 0
Flamboyant on silver base	2 9 0
Renewing head badge	4 6
Feather or double lining	15 6
Lining lugs	12 0
Name and club on top tube ... from	6 0

	£ s. d.
Head Tube Flam	10 6
Head tube, contrasting colour	8 6
Band on seat-tube enamelled	8 6
Stripping and re-assembling head and bottom bracket fittings	8 6

NOTE.—All Hetchins frames are built with 531 Reynolds Double Butted Tubes Forks, Seat and Chain Stays, Special Tempered Best Quality.

HETCHINS "MOUNTAIN KING" ROAD MODEL

A sturdily designed Frame, with a standard diamond dimensions of $22\frac{1}{4}$ " square, other sizes (unless to order) are also in quarter sizes upwards from $21\frac{1}{4}$ ".

Angles, 72° parallel, or $72^\circ 73^\circ$, with 22 " top tube, Bracket height $10\frac{1}{2}$ ", rear centres $17\frac{1}{4}$ ", rear triangle, either Vibrant or Standard Orthodox, with choice of $\frac{1}{2}$ " or $\frac{9}{16}$ " outside diameter seat stays.

Chain Stays, rapid taper, $\frac{3}{8}$ " diameter, Curved Brake Bridge reinforced, Seat cluster styled with petal shape flat seat eyes, Fork rake $1\frac{7}{8}$ " Italian style. Assembled with the latest Italian lugs, Reynolds best 531 special tempered tubing, butted tubes and stays etc.

Fork, built with the famous Prugnat distinctive oval crown solid forged with a standard fitment, reinforced ornaments on the outside of Blades. This ornamentation is exclusive to Hetchins who have in the past exploited this subtle improvement to Fork manufacture very fully.

Standard brazings are stop peg on down tube for lever clip, tunnels each side of Bracket, Brake stops on top tube, Pump pegs usually on front of seat tube, stop on chain stay for rear gear. Optional extras, Mafac curved Brake bridge, stop and guides for handle bar control gears, Lamp boss. Assembled parts are T.D.C. Italian head sets, Bayliss Wiley Bottom Bracket fittings and Alloy seat pin.

Suggested optional extras, Campag or Stronglight head sets, Campag front and rear ends.

Price: Flamboyant or Enamel finish £15 15 0

HETCHINS "TRACK SUPREME" PATH FRAME

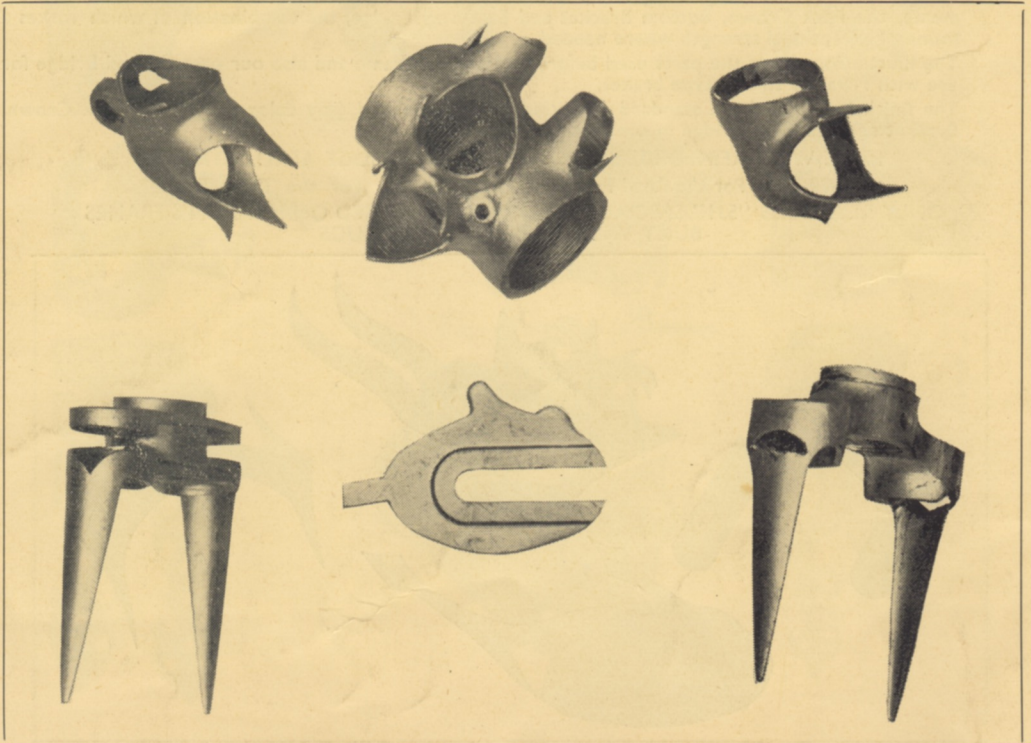
Standard dimensions or to specification, $22\frac{1}{4}$ " square but made in quarter sizes. Angles, $73^\circ 73^\circ$ Bracket height 11 " Rear centres $16\frac{3}{4}$ " Orthodox rear triangle, $\frac{9}{16}$ " Seat Stays, Fork Rake $1\frac{5}{8}$ ", $\frac{7}{8}$ " Round Blades, with Hetchins registered twin forged crown. Rear fork ends reinforced for added strength. Assembled with the latest Italian lugs and Reynolds Best 531 special tempered tubing, butted tubes, stays etc.

Fork $\frac{7}{8}$ " Round Crown with outside reinforcements for strength, Curved bridge.

Built with or without guard clearance or to any special tyre and rim clearance.

Price: Flamboyant or Enamel finish £16 5 0

Frame dimensions of the Mountain King and Track Supreme can be built into any of our other famous lug designs.



WELL-TRIED BICYCLE FRAME DESIGNS

ROAD RACING MODEL, No. 2. For Continental-style riding.

Frame sizes	Angles	Top tube centres
22"	72° 73°	22 $\frac{3}{4}$ "
22 $\frac{1}{2}$ "	72° 72 $\frac{1}{2}$ "	22 $\frac{1}{2}$ "
23"	72° 72°	22 $\frac{1}{2}$ "
23 $\frac{1}{2}$ "	72° 71 $\frac{1}{2}$ "	22 $\frac{1}{2}$ "
24"	72° 71°	22 $\frac{1}{2}$ "

Bracket height, 10 $\frac{1}{2}$ " with 27" Wheels

Fork. Expander head, fine tapered blades with 2 $\frac{1}{4}$ " rake, same style as Road Racing No. 1. Oval or round crown. Please state whether VIBRANT or ORTHODOX TRIANGLE.

Wheelbase, 41"

ROAD RACING, Nos. 3 and 3A. A mixed purpose model for Time Trial, Club, Mass-Start.

Frame angles. 73 $\frac{1}{2}$ ° Head, 71 $\frac{1}{2}$ ° Seat. Top-tube centres, No. 3—22 $\frac{3}{4}$ " or No. 3A—22". (When ordering, you must stipulate size required.) Wheelbase No. 3—40 $\frac{3}{4}$ ". Wheelbase No. 3A—40". Bracket height, 10 $\frac{3}{4}$ " with 27" Wheels.

Fork. Head-clip or Expander type with $\frac{7}{8}$ " round crown, or oval, whichever preferred. 2 $\frac{1}{4}$ " rake (new design). VIBRANT or ORTHODOX TRIANGLE.

ROAD RACING, No. 4. A general purpose design.

ROAD RACING, No. 6. Replica of the "Tour of Britain" Model. We strongly recommend this design for Mass-Start Racing.

Frame angles. 72 $\frac{1}{2}$ ° Parallel. Top-tube centres, 22 $\frac{1}{2}$ ". Wheelbase, 41". 10 $\frac{1}{2}$ " Bracket height. Rear centres, 17 $\frac{1}{2}$ ".

Fork. Expander head. Fine taper blades, with a 2 $\frac{1}{4}$ " offset of advanced design. Oval or $\frac{7}{8}$ " round fork blades. The standard brazed parts are: One pump peg behind seat tube. Brake eyes. Gear eyes or Tunnel and Adjuster (whichever preferred). No lamp bracket unless asked for. VIBRANT or ORTHODOX REAR TRIANGLE. 27" Wheels only.

PRICE with "Experto Crede" No. 1 lugs, enamelled any colour, £16 17 6.

PATH MODEL, No. 10. It would be difficult to find a more widely used and tried design, but we fully realise sense of rider and type of track can influence the rider's choice in design.

Frame angles. 73°, Head, 73°, Seat. Top-tube centres, 22 $\frac{1}{2}$ ". Bracket height, 11" or 10 $\frac{3}{4}$ ". Wheels only 27". Wheelbase, 40". $\frac{7}{8}$ " round twin crown with 1 $\frac{3}{8}$ " gradual rake and finely tapered. Expander head. **NO** brazed fittings. **NO** mudguard clearance. ORTHODOX TRIANGLE standard unless stated otherwise. All frames can be built with or without guard clearance, drilled for brakes.

"CIRCUIT OF BRITAIN". Designed for the aggressive rider. Standard dimensions:

Frame angles. 72°, Head, 73°, Seat. Top-tube centres, 21 $\frac{1}{2}$ ". Bracket Height, 10 $\frac{1}{2}$ ". Chain-Centres, 17 $\frac{1}{2}$ ".

Fork. 2 $\frac{3}{8}$ " rake with new gradual taper built with "Vade-Mecum" or "Experto Crede" lug work.

Alternative Angles. 72° Parallel, 21 $\frac{3}{4}$ " Top-tube, and 72° Parallel, 22" Top-tube.

Brazed Parts. Pump Pegs, Brake Stops, Tunnel, Adjuster, Lever Boss for Simplex.

Standard Finish. Enamel or Lustre, with lugs lined and contrasting split panel.

PRICE. £14 19 6.

Brake Stops on top of top tube is standard.

COMPLETE CYCLE from **£28 10 0**
With 5 gears Benelux or Simplex. including Purchase Tax

All frames and forks are filed and polished for chrome plating, irrespective whether final finish is enamel or plating over.

HETCHIN'S "Vade Mecum" HEAD ASSEMBLY

COPIED BY SOME — EQUALLED BY NONE
CRAFTSMANSHIP AT A REASONABLE PRICE

FRAME DESIGNS Recommended are:—

ROAD RACING No. 6 DESIGN as Illustrated

Head Angle 72 $\frac{1}{4}$ °. Seat Tube Angle 72 $\frac{1}{4}$ °. Top Tube Centres 22 $\frac{1}{2}$ ".
Wheelbase 41". Bracket Height 10 $\frac{1}{2}$ " with 27" Wheels Only.
Rear Chain Stays Centres 17 $\frac{3}{4}$ ". Fork Rake 2 $\frac{1}{8}$ ".

PATH RACING No. 10 DESIGN

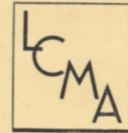
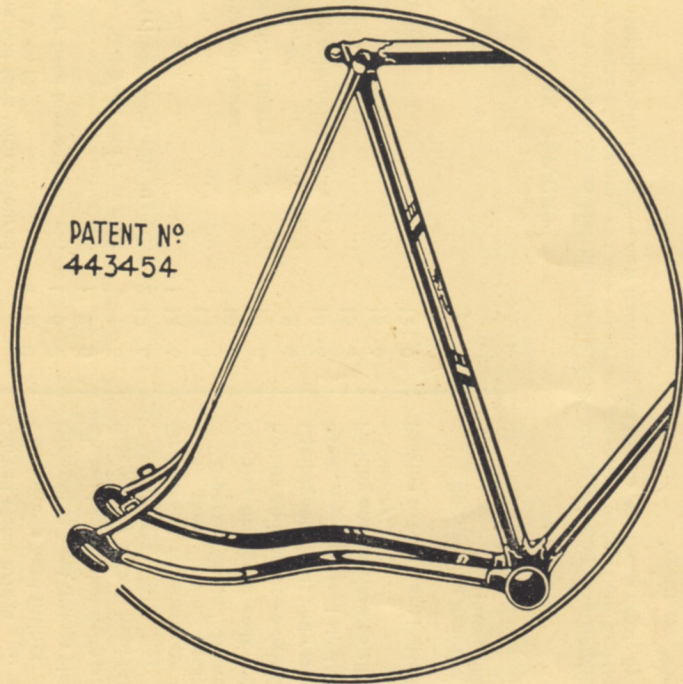
Fitted with $\frac{9}{16}$ " Orthodox OUTSIDE Diameter.
Seat Stays and extra thick Rear Fork ends with 2" slot.
Head Angle 73°. Seat Angle 73°. Top Tube Centres 22 $\frac{1}{2}$ ".
Bracket Height 11" or 10 $\frac{3}{4}$ ". 27" Wheels Only. Wheel Base 40 $\frac{5}{8}$ ".
 $\frac{7}{8}$ " Round Twin Crown with 1 $\frac{3}{8}$ " Path Rake. No Brazed Parts.
With or without Guard Clearance.

FRAME AND FORK ASSEMBLED **£14 19 6**

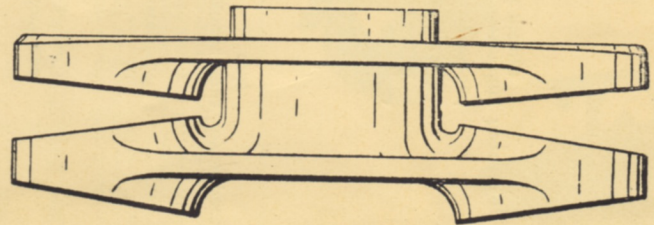
We will be pleased to quote you for a complete Machine, so send us your specification.



HETCHIN'S 'VIBRANT' TRIANGLE



Hetchin's Twin Forged Crown



Registered No. 849405